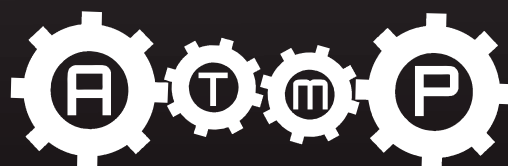


CATALOGUE OF AGRICULTURAL MACHINERY AND SNOW PLOWS



www.atmp.pl

ATMP

Good partner in agriculture!

The company ATMP has been operating in the agriculture market since 2007. It started its operations by manufacturing snow ploughs for quad vehicles. Our quick development resulted in expansion of our range of municipal machines and launching of accessories for tractors and loaders. The offered products met with great interest in the Polish market, and soon they were offered by foreign dealers.

The aim of the company is combining modern technologies with proved solutions, as well as improving standard of machines by using Polish materials of the highest quality, including:

- hydraulic systems and working components for machines, of Waryński brand;
- rubber in components replaced with more durable polyurethane.

An individual approach to needs of our customer needs by customising attachments to any machine translates not only into an increase in sales, but, what is more important, into satisfaction of our customers.

ATMP machines are presented at agricultural fairs in Poland, Germany, France, Ukraine, Romania, Belgium, Sweden, and Czech Republic, as well as in Africa and Kazakhstan.

AVAILABLE MOUNTS

Euro, SMS, 3 Point Hitch, JCB, Manitou, Komatsu, Caterpillar, Bobcat, Atlas, Weidemann, Case, New Holland, John Deere, Volvo, Massey Ferguson, Kubota, Kramer, XCMG, Liebherr, Giant, Hanomag, Schaffer and others.



www.atmp.pl

* weight in the catalogue do not include additional options and concerns machines with Euro mount.

Service and parts:

● Shot blasting and powder coating.

Professional shot blasting: cleaning and smoothing the surface before painting.

A professional painting chamber and furnace to components of maximum dimensions: 7,5x1,5x2,2m.

● Sale of consumable parts for agricultural and construction equipment.

In our offer you will find inter alia: starters, alternators, coolers, seats, forged and turned spikes, actuators, dividers, hoses and connectors and many other parts.

All machines are designed and manufactured with high precision.

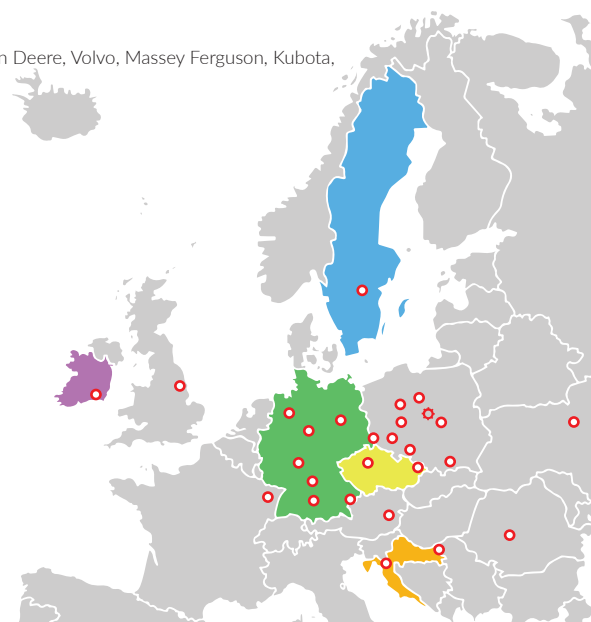
High quality and reliability of the machines is guaranteed by a modern machine park with CNC machines and qualified employees.

All ATMP machines perform the requirements of the Machinery Directive and have a CE declaration of conformity.

We offer warranty and post-warranty service of our machines and access to all spare parts.

We provide transport to customers throughout Europe.

Our products have been appreciated on the local and foreign market.





AGRICULTURAL MACHINERY AND SNOW PLOWS

TABLE OF CONTENTS

3 HARROW / DRAG BAR

5 BALE GRABS

6 WOOD GRABS

7 DISC PLOW

8 SEEDBED CULTIVATOR

9 SHOVEL-CROCODILE

10 MANURE FORKS WITH GRAPPLE

11 MANURE, BALE AND PALLET FORKS

12 LAND LEVELLER

13 SHOVELS

14 CEMENT / FEED MIXER

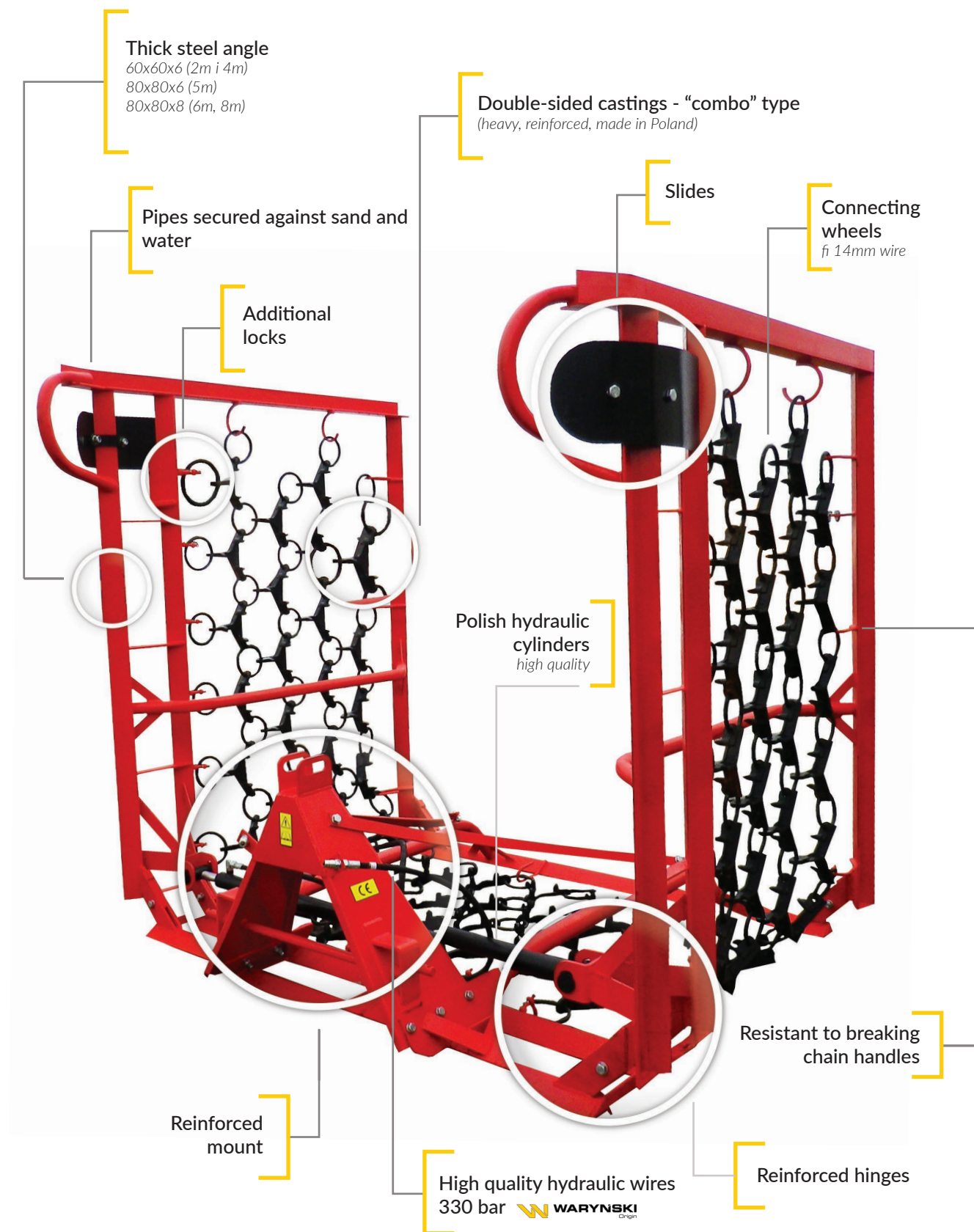
15 SNOW PLOWS

19 SWEEPERS

21 SAND / SALT SPREADER

22 MEADOW ROLLER

HARROW DRAG BAR



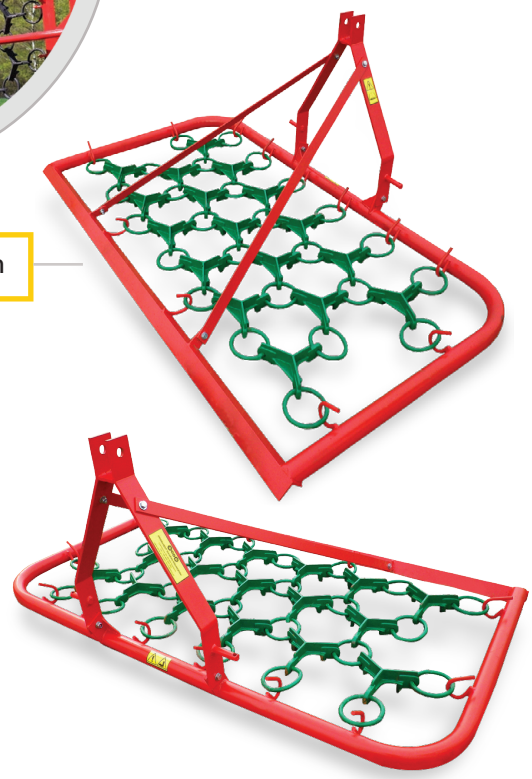


Drag harrow 8m
folding arms

All drag harrows are shot blasted and powder coated which protect against rust..

Additional undercoat or galvanization as an option.

Drag harrow 2m



Width	Actuator(s)	Rows	Castings	Tractor power	Real weight
2 m	-	3	17	from 15KM	90kg
4 m	-/1	4	50	from 40KM	340/360kg
5 m	1	4	62	from 60KM	520kg
6 m	1	4	74	from 75KM	610kg
8 m	2	4	102	from 95KM	795kg



BALE GRABS

We offer 2 types of bale grabs.

Grabs are solid build and have tested construction.

We use only Polish durable hydraulic cylinders and high quality hydraulic wires **WARYNSKI** with connectors.

Bale grabs' construction guarantees safe bale transport wrapped by foil. Grippers do not damage foil during transport and bale placement.

Bale grab CHB2 is equipped with grease-free polymer sleeves. Sleeves are resistant to friction and high load. Grease nipples are not necessary. They are perfect for places with high dust concentration. What is more, they absorb vibrations and are noise-free.

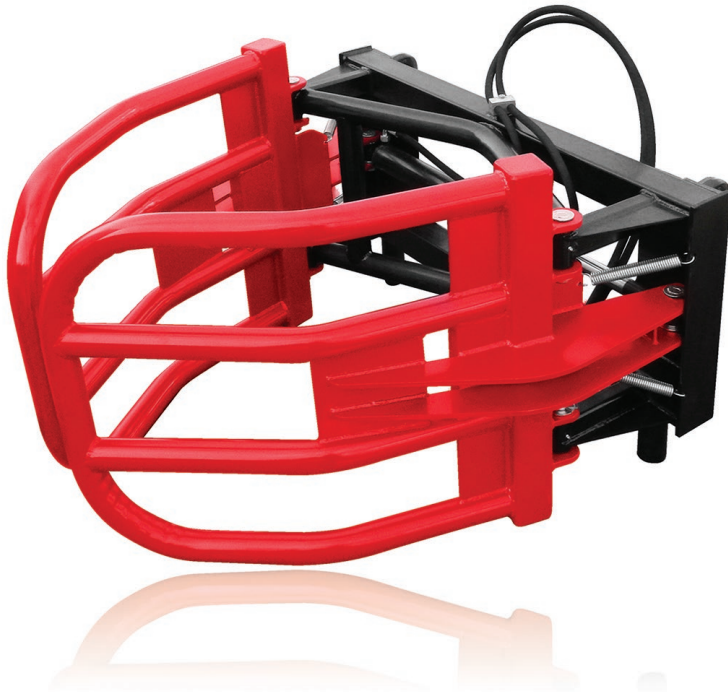
Wide arms guarantee a firm grip of bales.

Bale grab CHB2

- 2 hydraulic cylinders - inside construction
- wide arms
- thick pipe
- maintenance-free polymer sleeves
- arms opening: 1,6m
- weight: 170 kg



Bale grab CHB1 T2



- 1 hydraulic cylinder
- 4 springs
- thick pipe
- sleeves with grease nipples
- arms opening: 1,6m
- weight: 165 kg

WOOD GRABS

We offer two solid construction of wood grabs.

Machine is equipped with 2 reinforced hydraulic cylinders and polymer bushings.

	Model 1	Model 2
Opening height	1 m	1,5 m
Width	1,1 m	1,2 m
Min. depth	0,3 m	0,5 m
Height	1 m	1,4 m
Max. tree diameter	0,67 m	0,97 m
Weight	255kg	400kg



* any with for an individual order.

DISC PLOW

We offer disc plows with 3, 4 and 5 discs.

Disc plows are designed for fallow lands and forests.

Plows can be used for cultivation of light, medium and heavy soil. Rotating discs enable work in rocky fields and soil with after-harvest plant's debris. It works well on stony or full of roots fields and meadows.

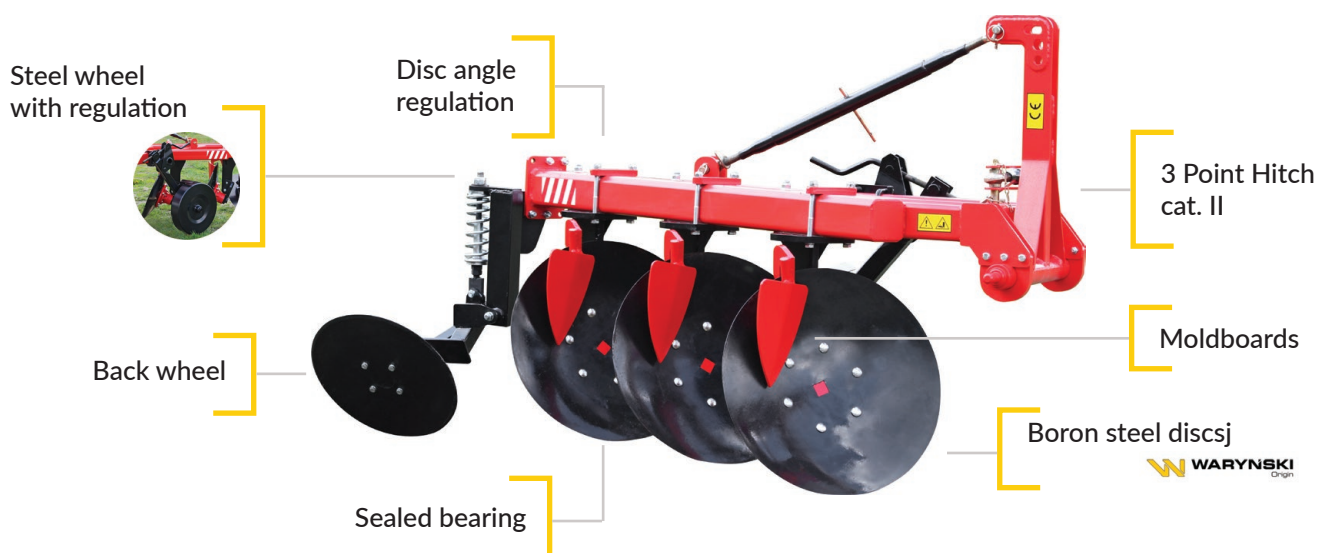
A machine is perfect for soil breaking, shallow tillage and firebreak lines.

A disc plow cuts, turns and in some cases breaks furrow slices by means of separately mounted boron steel discs.

It is designed to reduce friction and resistance thanks to rotating discs.

- It can penetrate into the soil, which is too hard and dry for a moldboard plow;
- It can be used safely in stony and stumpy soil without much danger of breakage.

Disc plow is made of the main frame, "legs" with discs, support wheel with regulation and adjustable mount (3 Point Hitch). Discs can be equipped with stabilizing wheel and moldboards, which shape ridges.

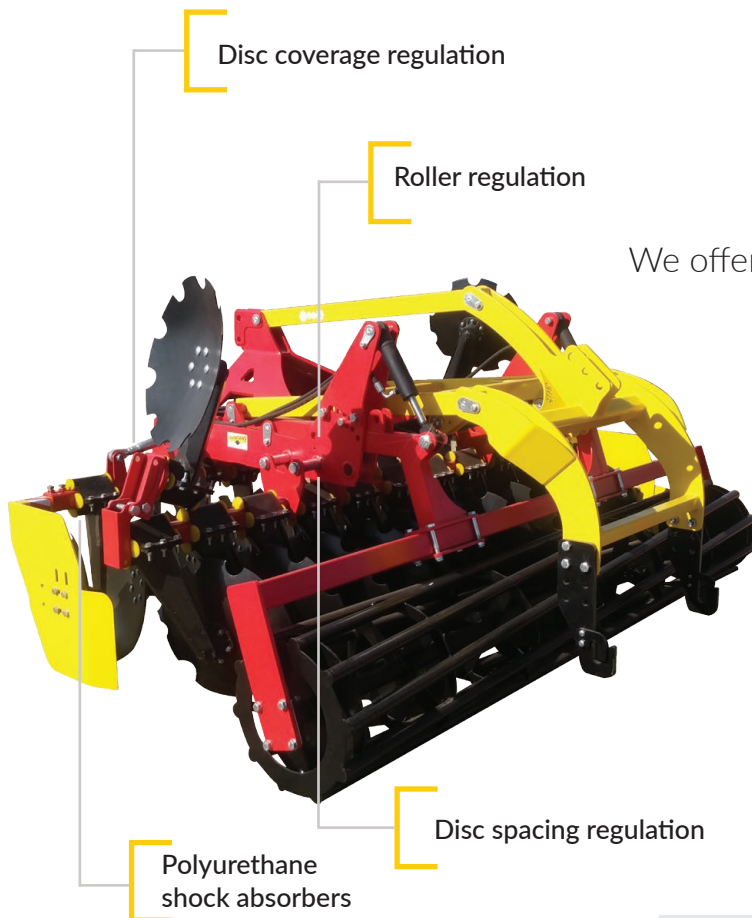


Discs (pcs.)	3	4	5
Total length (mm)	1935	2405	2875
Total width (mm)	1315	1515	1715
Weight (kg)	440	535	630
Work depth* (mm)	200 - 250	200 - 250	200 - 250
Work width* (mm)	850 - 970	1130 - 1250	1410 - 1530
Clearance under a frame (mm)	620 - 730	620 - 730	620 - 730
Disc diameter (mm)	660	660	660
Steel wheel diameter (mm)	510	510	510
3 Point Hitch cat. II (mm)	825	825	825
Tractor power required (KM)	60-65	75-85	95-105

*depends on disc angle



SEEDBED CULTIVATOR



We offer Seedbed cultivators available in 4 widths:
2,5m, 2,7m, 3m oraz 4m.

Machine is used for soil cultivation. It uncultures stubble, mixes crop residues with soil, as well as accelerates the process of mineralization.

Aggressive angle of discs provides good penetration of the soil and maintenance-free hubs with bearings for its long durability.

Cultivator is equipped with durable parts of Polish producers.

Working width (m)	2,5	2,7	3	4
Working depth (cm)	5-18	5-18	5-18	5-18
Disc (pcs.)	20	22	24	32
Disc diameter (mm)	560	560	560	560
Amortization	polyurethane	polyurethane	polyurethane	polyurethane
Weight (kg)	1200	1350	1450	1700
Tractor power required (KM)	85	95	105	130

We use one of the most durable boron steel discs Ø 560mm produced in Poland by Waryński. They are mounted separately and secured by polyurethane rollers which protect them from damage. Polyurethane rollers are extremely durable, UV-proof, unbreakable - they do not require annual replacement.

Cultivator is equipped with a tubular or flat-bar roller, side shields which limit soil dispersion of side discs.

With a hydropack the machine can be used for grain sowing.

The machine has regulated back beam and roller. This solution shortens total length of cultivator and enables connection to low power tractors.

Our machines have sealed and durable bearings and are powder painted.

Additional options:

- Hydraulic regulation of a roller
- Hydropack
- Packer roller
- V-ring roller
- Lights



SHOVEL-CRODOCILE



We present shovels with forks for loaders.

Machines are equipped with hard wearing steel blade HB500.

Our crocodiles have very durable polish forged spikes or steel spikes.

We use only polish hydraulic actuators - very durable.

Shovel-crocodiles have maintenance-free polymer bushings, which are resistant to friction and pressure.

Machines have removable side parts.

STANDARD SHOVEL-CROCODILES

width	1,2m	1,4m	1,6m	1,8m	2m	2,2m	2,5m
cap./weight (forged spikes)	0,45m ³ /300kg	0,53m ³ /330kg	0,6m ³ /350kg	0,68m ³ /365kg	0,77m ³ /380kg	0,84m ³ /390kg	0,95m ³ /400kg
cap./weight (steel spikes)	0,42m ³ /300kg	0,49m ³ /330kg	0,56m ³ /370kg	0,63m ³ /400kg	0,7m ³ /430kg	0,77m ³ /470kg	0,78m ³ /510kg

Shovel-crocodile forged spikes

STANDARD and XL

- Width: from 1m to 2,5m
- Height: 0,8m / **1,15m**
- Forged spikes 680mm (quantity of spikes depends on width of a machine)
- FoHard-wearing steel blade and bottom slides **HB500**
- Two hydraulic cylinders with double-braided wires and couplings.



The most durable Polish spikes



Shovel-crocodile steel spikes

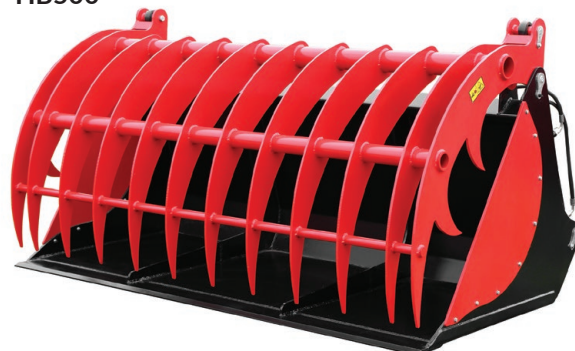
STANDARD

- Width: from 1m to 2,5m
- Height: 0,9m
- Steel spikes
- Two hydraulic cylinders with double-braided wires and couplings
- Hard-wearing steel blade and bottom slides **HB500**.



Shovel-crocodile steel spikes XL

- Width: from 1,8m to 3m
- Capacity: from 1,5m³ to 5m³
- Steel spikes
- Two hydraulic cylinders with double-braided wires and couplings
- Hard-wearing steel blade and bottom slides **HB500**



We present manure forks with grapples.

They are equipped with Polish extra strong forged spikes produced by Waryński (upper spikes 680mm, lower spikes 880mm)

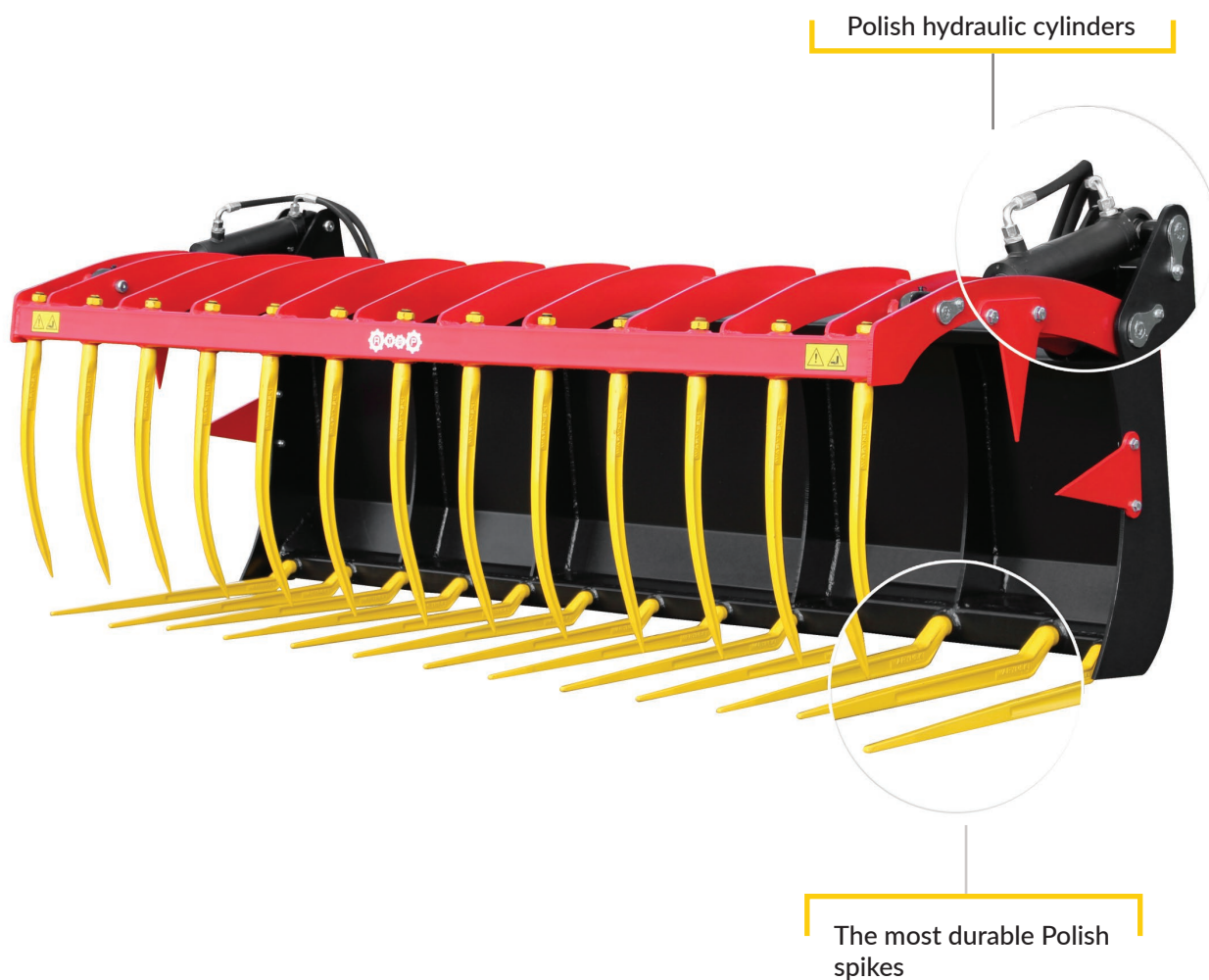
Welded bushings protect spikes from rotation and secure frame from damage.

Two durable hydraulic cylinders are produced in Poland.

The set includes double-braided hydraulic hoses (also made by Waryński) with couplings.

MANURE FORKS WITH GRAPPLE

width	1,2m	1,4m	1,6m	1,8m	2m	2,2m	2,5m
weight	235kg	260kg	300kg	330kg	365kg	395kg	435kg



Selected mount: Euro, SMS, JCB, CAT, Manitou etc.

FORKS

Manure forks

We present manure forks for transport of manure, straw or hay.

Forks are equipped with Polish forged spikes 880mm of very high durability.

width	1,4m	1,6m	1,8m	2m	2,2m	2,5m
weight	110kg	130kg	150kg	170kg	190kg	210kg



Bale forks

We present bale forks for transport of bales, straw, hay, ensilage.

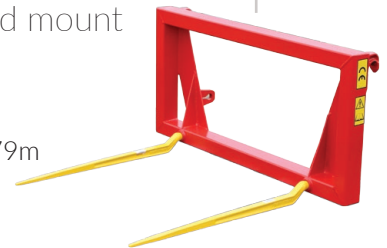
Forks are equipped with forged spikes 880mm of very high durability.

Welded bushings protect spikes from rotation and secure frame from damage.

We offer forks with Euro mount, SMS, 3 Point Hitch or any other mount.

Bale forks - selected mount

- Width: 1,12m
- Height: 0,54m
- Spikes spacing: 0,79m
- Weight: 45kg



Bale forks - 3 Point Hitch

- Width: 0,85m
- Height: 0,65m
- Spikes spacing: 0,55m
- Weight: 35kg



Pallet forks

We present pallet forks for forklifts and loaders (reinforced 2A frame).

Machine is equipped with two 80x40x1200 2t forks.

Forks have spacing regulation so they can be adjust to any type of a pallet.

A frame has extra bushings for 880mm forged spikes so We can use machine as bale forks.



width	1,3 m
height	0,4 m
total weight	142 kg



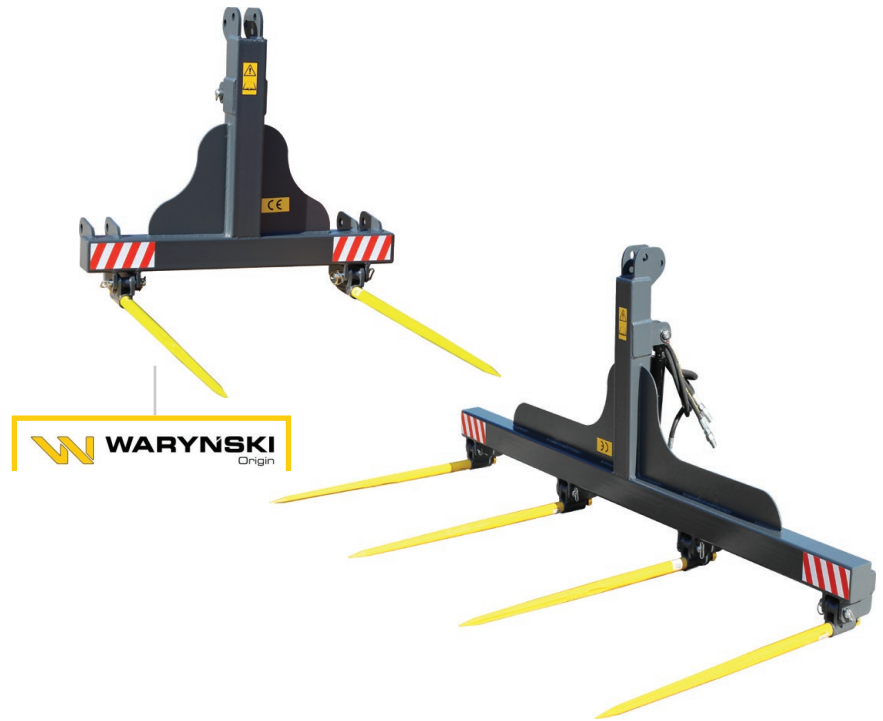
BALE FORKS

HYDRAULIC

We present hydraulic bale forks for manure, hay and straw transport.

Forks are equipped with forged spikes 880mm of very high durability, produced by Waryński. Hydraulic hoses (330 bar 2SN) and couplings are included.

spikes	2	4
width	0,9m	2,3m
height	1,1m	1,1m
spikes spacing	70cm	70-75cm
weight	70kg	132kg



LAND

LEVELLER

We present heavy duty land levellers.

These simple devices are very universal and useful for ground grading or distributing ground, gravel or other materials.

Sample dimensions:

120x120cm
150x120cm
180x120cm
200x120cm
250x120cm

High edge: 12cm



We can produce any width and length so they can be used with small tractors as well as big powerful agricultural or construction machines.

Devices are available with any mount: Euro, SMS, 3 Point Hitch, JCB etc.

SHOVELS

We present universal and capacitive shovels.

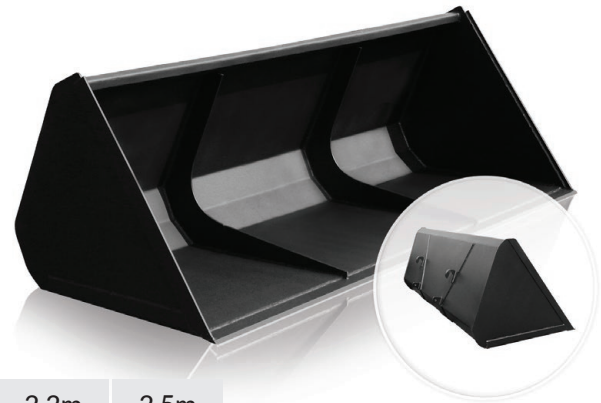
Shovels are made of 4-15mm high quality steel and have numerous reinforcements: side, on the top, back and hard wearing bottom slides.

All shovels are equipped with **hard wearing steel blades - HB500.**

Shovel for a forklift is equipped with very durable hydraulic cylinder(s).

Universal shovel

- Width: from 1m to 3m
- Capacity: to 1m³
- Depth: 0,85m
- Height: 0,7m



width	1,2m	1,4m	1,6m	1,8m	2m	2,2m	2,5m
capacity	0,4m ³	0,46m ³	0,53m ³	0,6m ³	0,66m ³	0,72m ³	0,82m ³
weight	180kg	195kg	205kg	210kg	220kg	265kg	280kg

Capacitive shovel

- Width: from 1m to 3m
- Capacity: from 1m³ to 4m³



width	1,6m	1,8m	2m	2,2m	2,5m	3m
capacity	2,2m ³	2,5m ³	2,7m ³	3m ³	3,3m ³	4,1m ³

Any width, height and depth on individual order.

]Shovel for a forklift

STANDARD / CAPACITIVE

- Width: 1m, 1,2m, 1,5m, 1,8m, 2m, 2,2m
- Capacitive shovel: 1m³, 1,5m³, 2m³
- 2 cylinders as an option
- A set includes hydraulic hoses and couplings
- Moving elements are equipped with grease nipples
- Reinforced "pockets"



STANDARD					
width	1m	1,2m	1,5m	1,8m	2m
capacity	0,32m ³	0,38m ³	0,48m ³	0,57m ³	0,64m ³
weight	145kg	170kg	170kg	185kg	200kg

CONCRETE / FEED

MIXER



We present a mixer for loaders, which can be used for mixing concrete and other materials: feed or grain.

A machine is a perfect solution in places where lack of electricity disable work of standard concrete mixers.

Advantages of a hydraulic transmission (comparing to a chain drive):

- There is no need to oil a chain. We just fill transmission with oil
- There is no leak of oil, like in chain drives – a machine do not stain ground
- A transmission has a hermetic close, which protects it from dust, sand and other dirt
- A machine is more silent during work than traditional mixers
- A concrete mixer is powered by a hydraulic instalation of machine to which it is attached.

model	MT120	MT140	MT160	MT180	MT200
total width (mm)	1550	1750	1950	2150	2300
working width(mm)	1200	1400	1600	1800	2000
effective capacity (liter)	420	490	560	630	670
total capacity (liter)	490	570	650	740	780
weight (kg)	500	540	590	630	660

A mixer is equipped with:

- A protecting grill with cutting edge to tear bags; It also protects from stones and other elements which can cause damage of a rotor
- An efficient reinforced rotor (left-right control)
- Double-braided hydraulic wires with couplings
- A Hydraulic opening of an output
- A hard-wearing steel blade HB500
- Exchangable mount
- A pipe for pouring out a material.



HARD-WEARING
STEEL BLADE **HB500**

SNOW PLOWS

We present snow plows for:

- tractors
- loaders
- forklifts
- passenger cars
- off-road cars
- ATV's and other vehicles.



Snow plows can be used for snow or mud removal.

All snow plows have solid and tested construction. They guarantee safe and trouble-free work.

Our machines are equipped with durable polish hydraulic cylinders.

Snow plows can be equipped with various blades:

- a rubber blade, reinforced with steel cables, 3cm thickness
- a rubber blade, reinforced with fabric, "cube" type, 5cm thickness.

Hard-wearing steel blade or polyurethane blade as an option.

Left/right control - manual ("roman" screw) or hydraulic cylinder(s) with steering panel.

Standard width of a snow plow is presented in the table. On customer's request We can make any width of a snow plow.

Weight refers to plows with standard equipment and Euro mount.



Selected mount: Euro, SMS, JCB, CAT, Manitou etc.

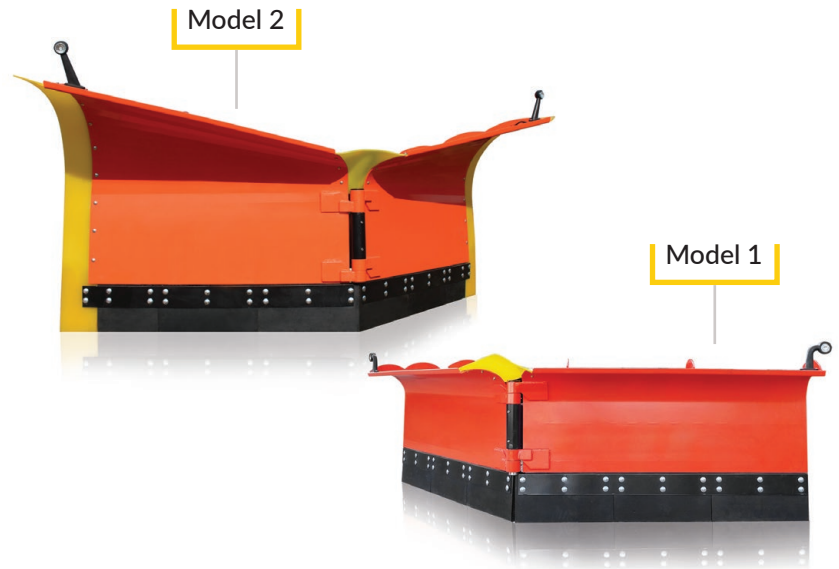
Snow plow V-shape

width	2m	2,2m	2,4m	2,6m	2,8m	3m	3,3m
weight	430kg	465kg	480kg	540kg	580kg	610kg	650kg

- Height: 0,95m
- A rubber scraper: "a cube" 50mm, reinforced
- LED lights
- Fully regulated arms
- Ground adjust/copy function
- Impact-absorbing springs
- Top arms connection: polyurethane
- Control panel: arms and lights

Additional options:

Slides, polyurethane support wheels, steel blade, polyurethane blade, polyurethane side protectors, hydroaccumulators.



Snow plow V-shape for small tractors / loaders



- Height: 0,7m
- A rubber scraper: "a cube" 50mm, reinforced
- LED lights
- Fully regulated arms
- Ground adjust/copy function
- Impact-absorbing springs
- Top arms connection: polyurethane
- Control panel: arms and lights

width	1,47m	2m	2,2m
weight	155kg	185kg	215kg

Additional options:

Slides, polyurethane support wheels, steel blade, polyurethane blade, polyurethane side protectors, hydroaccumulators.

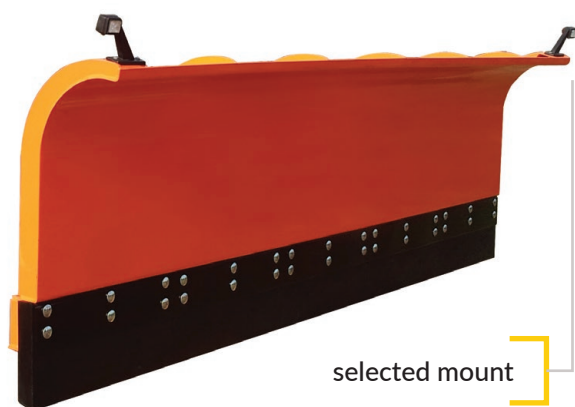
Snow plow - F type

width	2m	2,2m	2,6m	2,8m	3m	3,3m
weight	240kg	260kg	300kg	320kg	340kg	370kg

- Height: 0,95m
- A rubber scraper: "a cube" 50mm, reinforced
- Left/right control: manual ("roman" screw) or a hydraulic cylinder
- Ground adjust/copy function
- Impact absorbing springs

Additional options:

LED lights, HB500 steel blade, polyurethane blade, polyurethane side protectors



Snow plow - C type

width	2m	2,2m	2,6m	2,8m	3m	3,3m
weight	240kg	260kg	300kg	320kg	340kg	370kg

- Height: 0,9m
- A rubber scraper: "a cube" 50mm, reinforced
- Left/right control: manual ("roman" screw) or a hydraulic cylinder

Additional options:

LED lights, ground adjust/copy function, impact-absorbing springs, slides or polyurethane support wheels, steel blade, polyurethane blade, polyurethane side protectors



Snow plow light - C type

width	1,4m	1,6m	1,8m	2m	2,2m	2,5m
weight	150kg	165kg	180kg	190kg	210kg	235kg

- Height 0,7m
- A rubber scraper, reinforced with steel cables
- Left/right control: manual ("roman" screw) or a hydraulic cylinder



Additional options:

LED lights, HB500 steel blade, polyurethane blade.

Snow plow for an off-road car

Suzuki Samurai, Łada Niva, Chevrolet Blazer etc.

width	1,6m	2m
weight	120kg	140kg

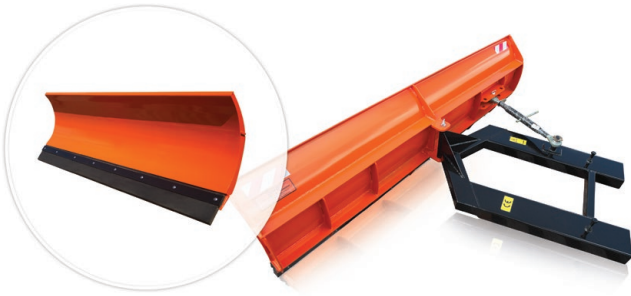
- Height: 0,48m
- A rubber scraper, reinforced with steel cables
- Left/right control: manual ("roman" screw) or a hydraulic cylinder
- A universal car mount
- An electric winch handle in set
- An electric winch as an option



Snow plow for a forklift

width	1,4m	1,6m	2m	2,2m	2,5m
weight	85kg	95kg	115kg	125kg	140kg

- Height: 0,48m
- A rubber scraper, reinforced with steel cables
- Left/right control: manual ("roman" screw) or a hydraulic cylinder



Snow plow grader - 3 Point Hitch

width	1,4m	1,6m	1,8m	2m	2,2m	2,5m
weight	95kg	110kg	125kg	140kg	160kg	185kg

- Height: 0,55m
- A rubber scraper, reinforced with steel cables
- Blade rotation: 360°
- Steel blade as an option
- Left/right control: manual ("roman" screw) or a hydraulic cylinder



Snow plows - equipment



"Roman" screw – basic versions of snow plow are equipped with manual angle control.



Hydraulic control – each plow can be equipped with a hydraulic actuator (1 or 2) with hoses and couplings; V-plow has also a hydraulic divider. A control panel is included.



Support wheels – two wheels with height regulation, made of polyurethane; they help control working height of a plow.



Impact-absorbing springs – impact is absorbed by 4 springs (with regulation).



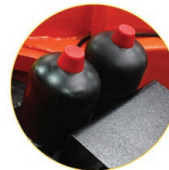
Frame with ground copying function – „floating" frame which adjust angle and height of a plow.



Slides – a pair of slides with height regulation; they help control working height of a plow.



Steel blade – very durable blade, made of hard wearing steel HB500.



Hydroaccumulator – pressure vessel suppressing pulsation in the hydraulic circuit.



LED lights – a set of lights with a control panel.



Polyurethane blade – very durable blade; any hardness available; 3cm thickness.



Side polyurethane protectors – they protect snow plow's sides; enable work near curbs, posts, railings.

SWEEPER

HYDRAULIC MODEL 1

A machine is designed for cleaning large surfaces: asphalt, concrete, pavement, industrial floors etc. Sweepers are used in municipal, construction and agriculture industry. They are suitable for telescopic handlers, backhoe loaders and tractors.



Standard equipment:

- Very durable brush driven by a hydraulic motor
- Blade made of polyurethane
- Adjustable height of the brush
- Integrated tank for swept material
- Hydraulic emptying of a tank
- Wheels
- Changeable mount
- Frame with copying ground function.

The sweeper can be equipped with side brush, water spray system and wireless touch-screen steering panel.

Type	ZMC180	ZMC200	ZMC220	ZMC240
Total width (cm)	213	233	253	263
Working width (cm)	180	200	220	240
Brush diameter (mm)	600	600	600	600
Total weight (kg)	420	450	480	510
Max. speed (km/h)	10	10	10	10
Min. oil flow (l)	40	40	40	40
Max. oil flow (l)	60	60	60	60
Min. oil pressure (bar)	70	70	70	70
Max. oil pressure (bar)	175	175	175	175

SWEEPER

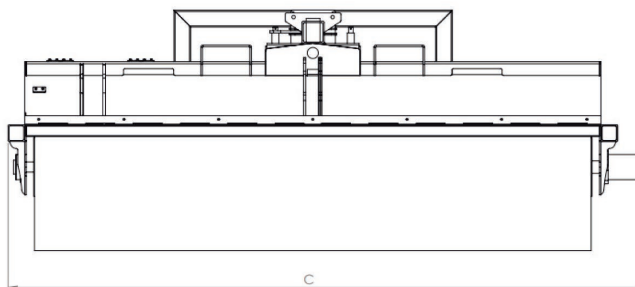
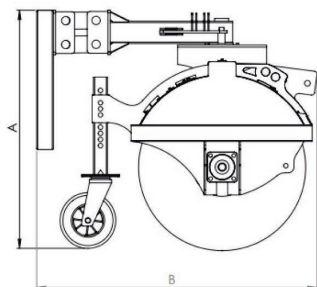
HYDRAULIC MODEL 2



- Fast and easy brush change
- Durable plastic brushes; diameter: 60cm
- Wheels enabling to control work-height of a sweeper and raising up a machine after work is finished which protects a brush against deformation
- Changeable mount - for any loader.



Wireless touch-screen steering panel



Type	ZML120	ZML160	ZML180	ZML200	ZML220	ZML240
Total height (cm)	85	85	85	85	85	85
Total depth (cm)	100	100	100	100	100	100
Total width (cm)	150	190	210	230	250	270
Weight (kg)	150	190	210	230	250	270

Standard equipment:

- rubber wheels
- frame with ground copying function
- hydraulic hoses
- mount for forks
- euro mount (any mount available).

Additional equipment:

- sprinkler system
- side brush (with sprinkler system)
- waste container with hydraulic opening (polyurethane blade and cover)
- hydraulic regulation of work angle of a sweeper (manual control as standard)
- polyurethane wheels.



*a sweeper can be equipped with additional options anytime after purchase.



SWEEPER

HYDRAYULIC MODEL 3

- Mount for any construction or agricultural machine
- Fast and easy brush change
- Brush diameter 600mm
- Hydraulic drive
- Can be used as a snow removal.

Standard equipment:

- rubber wheels
- hydraulic hoses with couplings
- frame with ground copy function
- support stands
- mount: Euro, 3 Point Hitch or SMS.

Typ	ZE120	ZE160	ZE180	ZE200
Total width (mm)	1414	1885	2120	2356
Working width (mm)	1200	1500	1800	2000
Height (mm)	558	558	558	558
Lenght (mm)	1229	1229	1229	1229
Height with a mount (mm)	860	860	860	860
Brush diameter (mm)	500	500	500	500
Weight (kg)	100	100	100	100

Additional equipment:

- polypropylene and steel brushes
- hydraulic work angle regulation.

SALT / SAND

DISTRIBUTOR

Machine is built for distribution of salt or sand and aggregate on construction site. It can be also used for whitewashing of lawns or fields. Machine has a hydraulic gear. It do not damage parked cars and is safe for pedestrains.

Type	PSS160	PSS200	PSS240
Working width (cm)	157	198	238
Transport width (cm)	180	220	260
Tractor power (KM)	od 50	od 60	od 70
Moimt cat. (3 Point Hitch)	II	II	II
Drive type	hydraulic	hydraulic	hydraulic
Oil flow (l/min.)	10-40	10-40	10-40
Oil pressure (bar)	150	150	150
Capacity (m ³)	0.5	1,05	1,6
Max. working speed (km/h)	15	15	15
Max. transport speed (km/h)	25	25	25
Weight without load (kg)	557	700	843
Weight with load* (kg)	1545	2295	3125

*for sand (1m³ = 1520 kg)

- Easy loading
- Fast emptying system
- Precise distribution



MEADOW ROLLER

This agricultural machine is designed for cultivation of meadows and pastures. Meadow roller eliminates inequalities of ground (eg. molehills), removes earth cracks in the structure of the soil and increases oozing by pressing the turf to native soil. Maximum pressure (for the roller with a diameter of 1220mm), is approximately 850kg (without water load) to the approximately 2020kg (loaded with water) for each meter of working width of the machine.

Each roller is equipped with hydraulic regulated carriage and thill regulated by central screw. That screw allows connect a machine to the transport hitch of the tractor without changing machines' position.



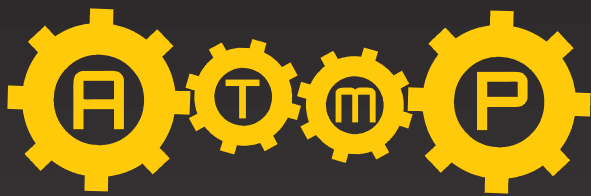
Standard equipment:

- Adjustable thill regulated by a central screw
- Rotating hook (up to 1,2t)
- Parking supports
- 3 internal bulkheads increasing the stability of the roller.

Additional equipment:

- Lighting
- Wheels (ADR shafts) with hydraulic regulation
- Scraper
- Various tires (eg. Flotation STARCO, ALLIANCE)
- Other diameter of a roller.

Type	WL25	WL27	WL3
Diameter of a roller (mm)	Ø 1220	Ø 1220	Ø 1220
Weight - without water (kg)	2090	2190	2290
Weight - with water (kg)	5040	5415	5790
Height (mm)	1400	1400	1400
Total width (mm)	3150	3425	3650
Working width (mm)	2500	2750	3000
Lenght (mm)	4600	4600	4600
Transport speed (km/h)	30	30	30



www.atmp.pl

We are
a member of



The Polish Chamber of Commerce
of Agricultural Machines and Facilities

You will find Us
on Polish exhibition

AGRO SHOW
Bednary, Poland

ATMP Producer of Agricultural Machines
and Snow Plows
Leśniewice Małe 54
09-500 Gostynin, Poland

e-mail: biuro@atmp.pl